



EARTHQUAKE[®]

CUSTOM HOME THEATER



EARTHQUAKE[®]
SOUND
The Sound That Will Move You

WELCOME

For over 25 years, Earthquake Sound has been producing a variety of high quality audio products that have impressed the audiophile communities throughout the world. From mobile audio to prosound and home audio, Earthquake Sound was selected as the winner of many prestigious awards based on sound quality, performance, value and features.

Engineered by audiophiles for audiophiles, Earthquake speakers are meticulously crafted to reproduce each and every single note perfectly, bringing your home theater experience to life. With true dedication and full attention to details, our engineers continuously develop new and better products to meet consumers' needs and go beyond their expectations.

Suffice to say that Earthquake Sound strives to provide consumers with the highest quality products at affordable prices without any compromise.

EXPORT ACHIEVEMENT

The United States Secretary of Commerce Gary Locke honored Earthquake Sound with an export achievement award for recent accomplishments in the global market place at the 2011 Consumer Electronics Show.

Joseph Sahyoun (founder of Earthquake Sound Corporation) and Abraham Sahyoun (Export Manager) were grateful for the opportunity to briefly discuss important business developments with the Secretary. The US department of commerce recognized Thomas Mygind, President of Earthquake Europe for his achievement in expanding export operations thus creating American jobs.

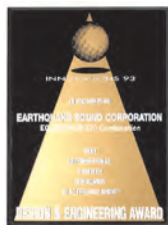
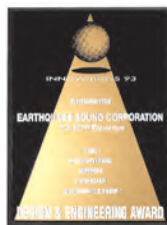
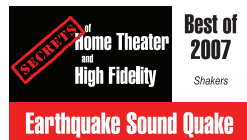
Earthquake Sound has a strong and fruitful relationship with the US Department of Commerce and appreciate their continued assistance in expanding global sales operations.



TABLE OF CONTENTS

- | | | | |
|---|--------------------------------------|-------|---------------------------------|
| 4 | Edgeless In-Wall Speakers | 10 | Reference In-Ceiling Speakers |
| 5 | Edgeless In-Ceiling Speakers | 11 | Thor In-Wall SUB10 |
| 6 | Sweet Spot & ACS In-Ceiling Speakers | 12 | AWS All Weather Speakers |
| 7 | IQ CM In-Ceiling Speakers | 13 | ROCK-on Outdoor Speakers System |
| 8 | Image X In-Wall Speakers | 14 | Cin nova Ir16 Amplifier |
| 9 | Image X In-Ceiling Speakers | 15 | XJ300FR Amplifier, SWAT-2.4X |
| | | 16-18 | Specifications |

AWARDS



Over the years, CEA and numerous publications have awarded Earthquake Sound with over a dozen Design and Engineering Awards. Additionally, Earthquake has been granted many design patents by the USPO for audio designs that have revolutionized the audio industry.



EDGELESS

in-wall & center speakers

AVAILABLE MODELS:
EWS-600 (6 1/2")
EWS-800 (8")
EWS-530C (3-way LCR 5 1/4")



EDGELESS DESIGN
 MAGNETICALLY
 ATTACHED GRILLE
 WITH LESS THAN
 5MM PROTRUSION

+ / - 3 dB
 BOOST/CUT
 FOR BASS &
 TREBLE



SPECIAL FEATURES:

1" SILK DOME ROTATING TWEETER/S
 MAGNETICALLY ATTACHED GRILLE
 LOW MASS STIFF KEVLAR CONES
 WITH OVERSIZED BUTYL SURROUND



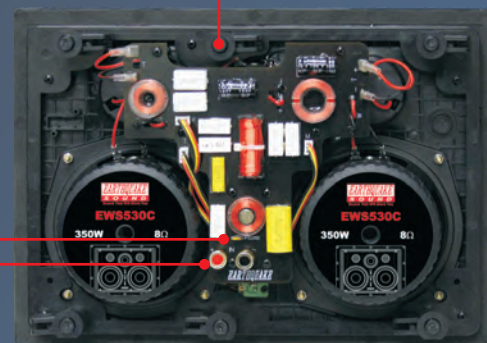
+ / - 3 dB
 BOOST/CUT
 FOR BASS,
 TREBLE &
 MIDRANGE



EASY INSTALL
 "TURN & LOCK"
 MECHANISM

CROSSOVER FEATURES:

12dB/OCT CROSSOVER
 POLYSWITCH PROTECTION
 HIGH GRADE GLASS EPOXY PCB
 MACHINED GOLD TERMINALS
 PRECISION CAPACITORS & INDUCTORS

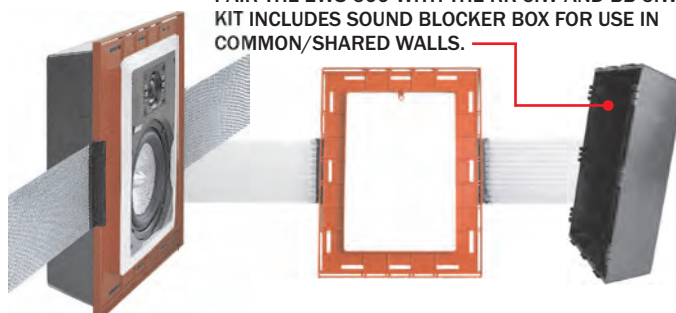


The EDGELESS Series of In-Wall & In-Ceiling Speakers is one of Earthquake Sound's most valued speaker lines. Designed with aesthetics and sound quality in mind, these speakers seamlessly blend into their surroundings as they provide a lifetime of durability and high-end performance.

Built with the highest quality materials, crossovers, tweeters and driver components; the EDGELESS speakers have the ability to deliver precise sound without side effects.

PRE-CONSTRUCTION KIT WITH SOUND BLOCKER

PAIR THE EWS-600 WITH THE RK-6IW AND BB-6IW. KIT INCLUDES SOUND BLOCKER BOX FOR USE IN COMMON/SHARED WALLS.



AVAILABLE MODELS:

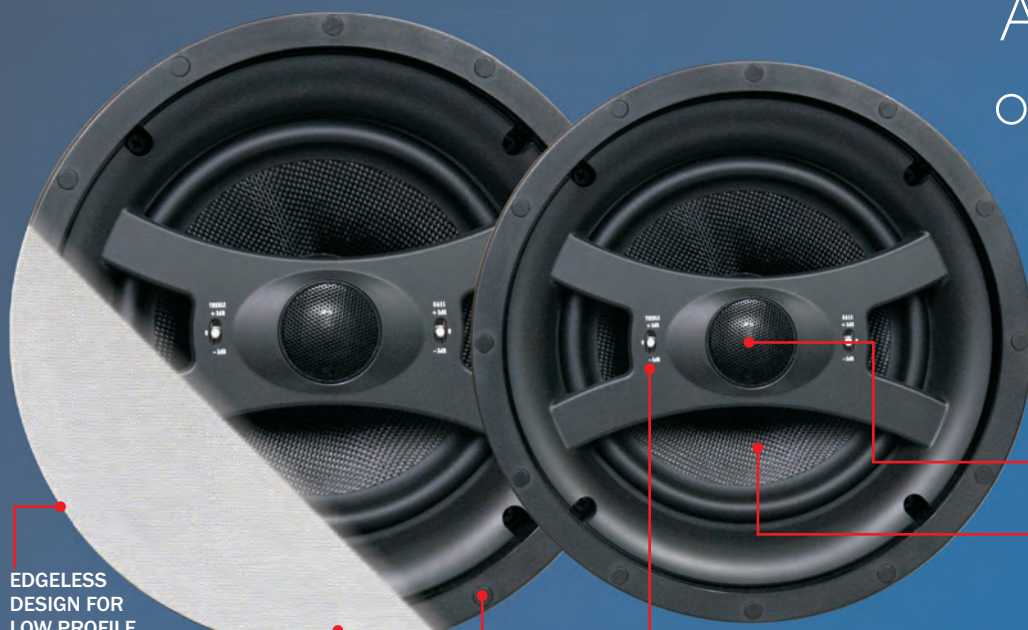
ECS-6.5 (6 1/2")

ECS-8.0 (8")

EDGELESS

in-ceiling speakers

A seamless blend
of high-end audio
& interior design



EDGELESS
DESIGN FOR
LOW PROFILE
SEAMLESS INTEGRATION
LESS THAN 5MM PROTRUSION

MAGNETICALLY
ATTACHED GRILLE

+ / - 3 dB
BOOST/CUT
FOR BASS &
TREBLE

SPECIAL FEATURES:

1" SILK DOME ROTATING TWEETER/S
MAGNETICALLY ATTACHED GRILLE
LOW MASS STIFF KEVLAR CONES
WITH OVERSIZED BUTYL SURROUND



CROSSOVER FEATURES:

12dB/OCT CROSSOVER
POLYSWITCH PROTECTION
HIGH GRADE GLASS EPOXY PCB
MACHINED GOLD TERMINALS
PRECISION CAPACITORS & INDUCTORS

EASY INSTALL
"TURN & LOCK"
MECHANISM



RECOMMENDED AMPLIFIERS:

CINÉNOVA IR16

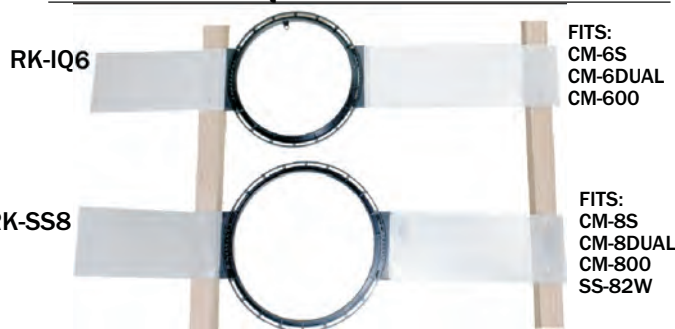
XJ-300FR (AS ZONE AMPLIFIER)



The Edgeless Series features:

- Frameless design for reduced visibility/seamless blend
- Long excursion low-mass kevlar woofer cones
- 1" (25mm) silk dome NEO swiveling tweeters
- \pm 3dB bass and treble controls (\pm 3dB midrange on the EWS-530C)
- Elaborate crossover networks
- Easy Turn-N-Lock™ installation mechanism
- Gold plated, spring loaded terminals
- Magnetically attached, paintable grilles

ROUGH IN KIT RK-IQ6 AND RK-SS8 FOR EASY-INSTALL



FITS:
CM-6S
CM-6DUAL
CM-600

FITS:
CM-8S
CM-8DUAL
CM-800
SS-82W

SWEETSPOT & ACS-3.0

in-ceiling speakers

AVAILABLE MODELS: **SS-82W** (8", 8Ω voice coil) & **ACS-3.0**

SS-82W

SPECIAL FEATURES:

1" SILK DOME ROTATING TWEETER WITH INDEPENDENT AIM

MAGNETICALLY ATTACHED GRILLES

HIGH GRADE GLASS EPOXY PCB WITH MACHINED GOLD TERMINALS AND HIGH QUALITY CAPACITORS AND INDUCTORS



±3dB TREBLE/BASS BOOST & CUT

20° ANGLE AIM



PAIR THE SS-82W WITH THE ROUGH IN KIT RK-SS8 FOR THE EASIEST INSTALL

ACS-3.0

Architectural Ceiling Mount Speakers

SPECIAL FEATURES:

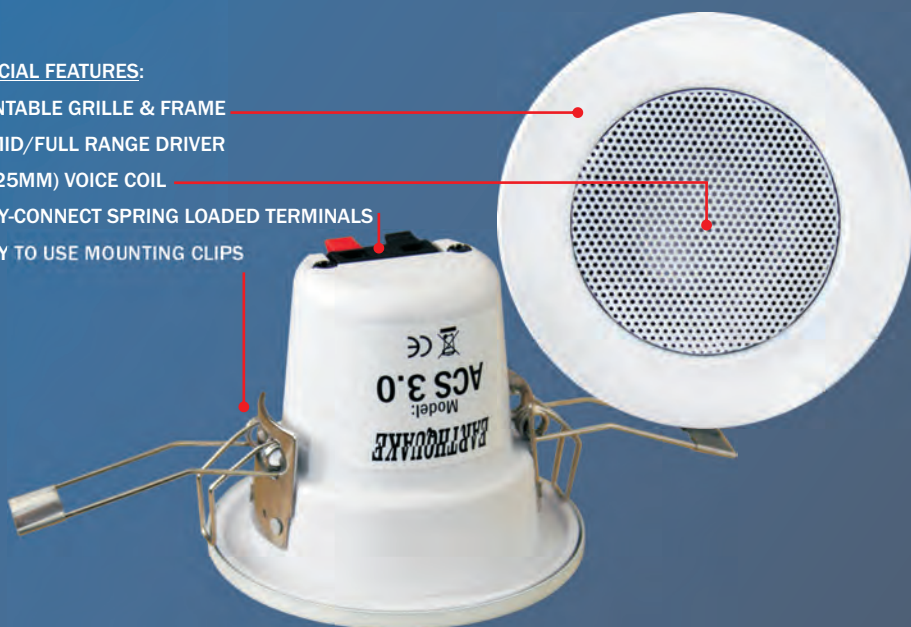
PAINTABLE GRILLE & FRAME

3" MID/FULL RANGE DRIVER

1" (25MM) VOICE COIL

EASY-CONNECT SPRING LOADED TERMINALS

EASY TO USE MOUNTING CLIPS



RECOMMENDED AMPLIFIER:
CINÉNOVA IR16



The SweetSpot dual aimed in-ceiling speaker is designed specifically for those who are particular about musical staging and directional sound. Built with the highest quality materials, crossovers, tweeters and driver components, the SweetSpot speakers have the ability to deliver precise sound stage without side effects such as echos, rattles, reflections and refractions commonly found in manually aimed speakers.

The SweetSpot simplified grille installation uses Neo magnets to pull the grille into position, providing an even and clean fit.

The new ACS 3.0 (Architectural Ceiling speakers) were designed to produce audiophile quality sound from a compact package. These tiny speakers can effortlessly produce full sound that will impress you.

With its resemblance to ceiling recessed lights, and with paintable grille and frame; the ACS 3.0 can easily blend to its surrounding. Whether you want background/ambient music or practical enhancement to your surround sound, the ACS 3.0 In-Ceiling speakers are the ideal speakers for the job.

AVAILABLE MODELS:

CM-6S (6 ½" single 8Ω voice coil)

CM-6DUAL (6 ½" dual 8Ω voice coil)

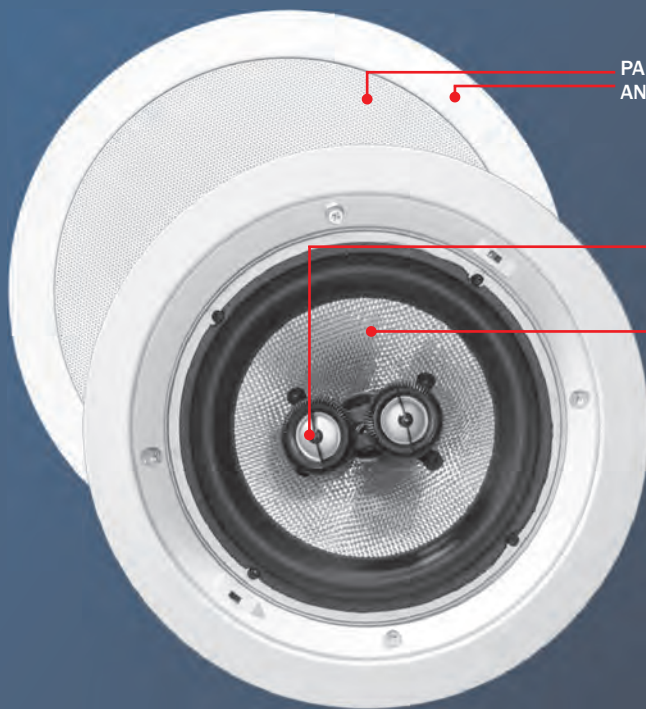
CM-8S (8" single 8Ω voice coil)

CM-8DUAL (8" dual 8Ω voice coil)

IQ

in-ceiling speakers

Smart solutions



PAINTABLE GRILLE
AND FRAME

SPECIAL FEATURES:

DUAL 20mm SILK DOME NEO TWEETERS
AT 20 DEGREE OFFSET THAT PROVIDE
EQUAL LINE LEVEL LINEARITY

CARBON FIBER CONE WITH OVERSIZED
BUTYL SURROUND

12dB/OCT CROSSOVER WITH POLY FUSE
PROTECTION AND MACHINED GOLD
TERMINALS

POLYSWITCH ADVANCED PROTECTION

PAIR THE CM-6S AND THE CM-6DUAL WITH THE ROUGH IN
KIT RK-IQ6 AND THE CM-8S AND THE CM-8DUAL WITH THE
ROUGH IN KIT RK-SS8 FOR THE EASIEST INSTALL



FITS:
CM-6S
CM-6DUAL
CM-600

FITS:
CM-8S
CM-8DUAL
CM-800
SS-82W

EASY INSTALL
"TURN & LOCK"
MECHANISM



DUAL VOICE COIL

RECOMMENDED AMPLIFIER:
CINÉNOVA IR16
XJ-300FR (AS ZONE AMPLIFIER)



The IQ audiophile in-ceiling speakers are designed to produce a flawless sound in an imperfect room.

With woven carbon fiber as the speaker cone material, the IQ series has low mass, stiff cone and low harmonic cone distortions. The IQ series employs over-sized butyl surround which allows long excursions and enhances the low frequency extension well beyond the typical response of any other in-ceiling speakers.

The IQ in-ceiling speaker series features the dual tweeter swivel system. Mounted on a rotating ball, these dual tweeters can be positioned to optimize sound quality for the listeners. The 20 degree offset between the two tweeters allows them to produce line-on-axis response from the front to the back of the room while maintaining maximum stereo separation.

Equipped with a tonal control switch, the IQ speakers have -3dB - 0dB corrections. The IQ series include single and dual voice coil options to accommodate bathroom installations and ambient music.

IMĀGE-X

in-wall speakers

AVAILABLE MODELS:
IMĀGE-5X (2-way 5 ¼")
IMĀGE-6X (2-way 6 ½")
IMĀGE-8X (2-way 8")
IMĀGE-846X (3-way 8")

IMAGE-846X FEATURES:

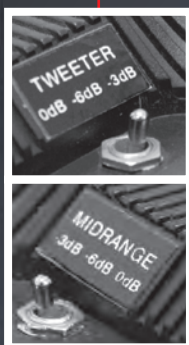
HIGH TEMPERATURE RIBBED BACK BOX WITH NON-FLEXING PERFORMANCE

ADJUSTABLE 1" SILK DOME TWEETERS FOR BETTER DISPERSION AND A MORE EVEN COVERAGE

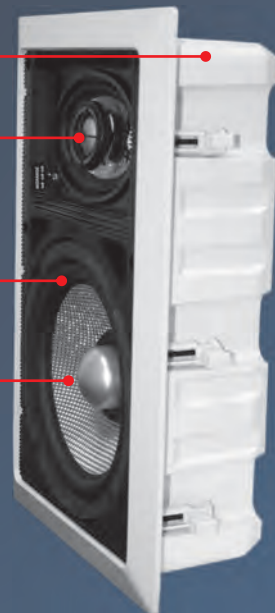
CARBON FIBER COMPOSITE CONES WITH BUTYL RUBBER SURROUNDS

PORT TUNED ENCLOSURE

8" WOOFER WITH LONG EXCURSION MOTOR AND 2" HIGH POWER HANDLING VOICE COIL



-3dB / -6dB CUT



1" SILK DOME SWIVEL NEO TWEETER



18dB EPOXY BOARD, HIGH CURRENT, HIGH TEMPERATURE CROSSOVER WITH POLYSWITCH PROTECTION



1" SILK DOME SWIVEL TWEETER WITH NEO MOTOR.
 HIGH CURRENT BASS & TREBLE 3db BOOST/CUT



RECOMMENDED AMPLIFIERS:
 CINÉNOVA 7
 CINÉNOVA IR16



Earthquake engineers have spent countless hours perfecting the Imāge-846X so it can reproduce sound as if you are sitting center stage. With paintable grilles and frames, the Imāge-846X is the speaker of choice when you seek both performance and elegance in your in-wall speaker system.

The Imāge 2-way in-wall speakers integrate poly injection woofer cones, 1" swiveling silk dome neodymium tweeters, and built-in tonal adjustments (0dB – ±3dB Bass and Treble controls). With rust proof grilles and paintable frames, the Imāge in-wall speaker series can be easily integrated into your home décor. For a 7-channel system, use these in-walls with the Imāge center speaker in your home theater for a clean, streamlined set-up.

PRE-CONSTRUCTION KIT

PAIR THE IMĀGE-6X WITH THE RK-6IW AND BB-6IW FOR AN EASY INSTALL KIT THAT INCLUDES A SOUND BLOCKER BOX FOR USE IN COMMON/SHARED WALLS.



AVAILABLE MODELS:

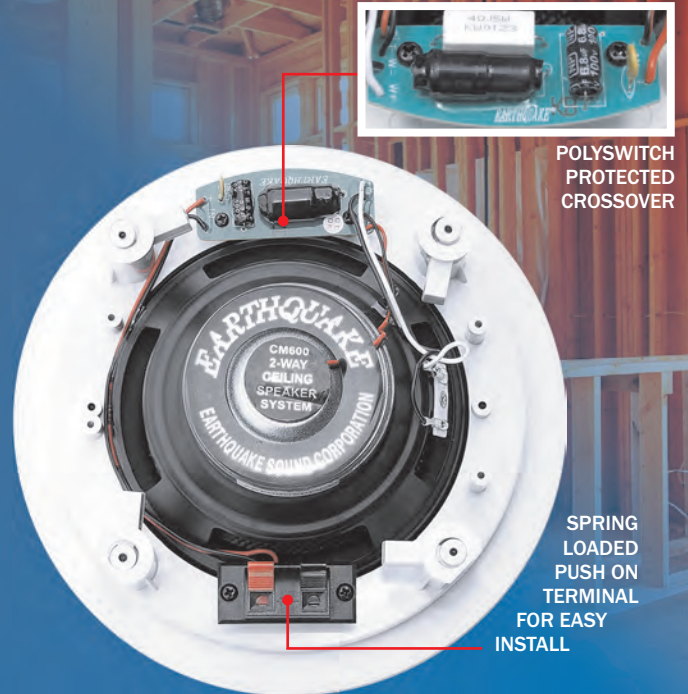
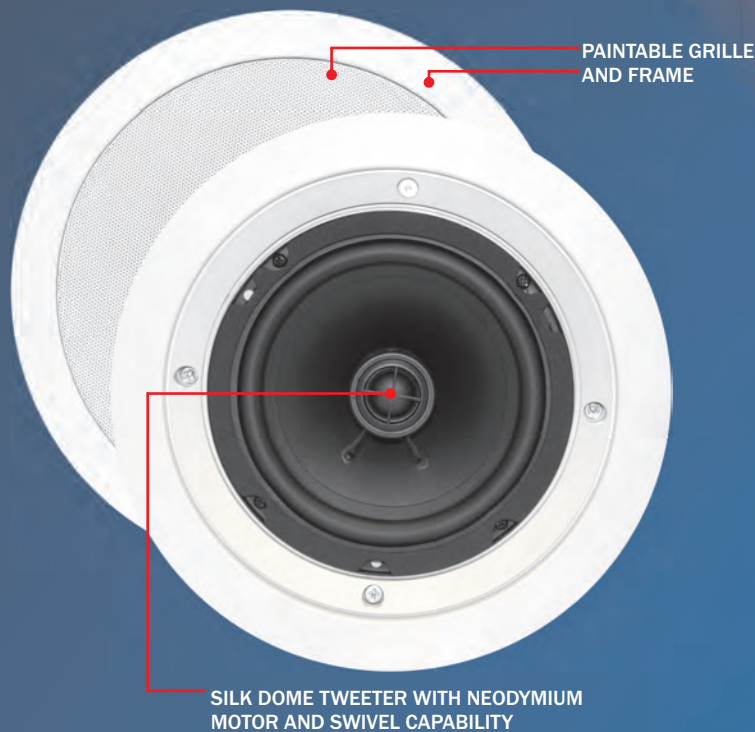
IMĀGE-C25X (5 ¼" LCR channel)

CM-600 (2-way 6 ½")

CM-800 (2-way 8")

IMĀGE-X

center & in-ceiling speakers



PAIR THE CM-600 WITH THE ROUGH IN KIT RK-IQ6 AND THE CM-800 WITH THE ROUGH IN KIT RK-SS8 FOR THE EASIEST INSTALL

RK-IQ6



FITS:
CM-6S
CM-6DUAL
CM-600

RK-SS8



FITS:
CM-8S
CM-8DUAL
CM-800
SS-82W

RECOMMENDED AMPLIFIER:
CINÉNOVA IR16
XJ-300FR (AS ZONE AMPLIFIER)



The Imāge in-ceiling speakers are designed to produce an incredible sound pressure level with only a mere 5 watts. Most multi-zone amplifiers often have less than 35 watts of power. The efficient Imāge speakers can produce an audiophile performance with ease, making them the solution to your multi-zone application.

The cone of Imāge in-ceiling series is made of a patented fiber impregnated poly which provides a stiff cone with only half the mass. Each speaker is equipped with a 20mm silk dome tweeter with a rotating mount, allowing the tweeter to be

aimed at the direction of the listeners. In addition to the push terminal feature, the Imāge in-ceiling speakers also have a poly switch to prevent them from getting over powered.

Just as its in-wall counterpart, the Imāge in-ceiling speakers have rust proof grilles and paintable speaker frames.

REFERENCE

in-ceiling speakers

AVAILABLE MODELS:

RCS-500 (5 ¼")

RCS-650 (6 ½")

RCS-800 (8")



SPECIAL FEATURES:

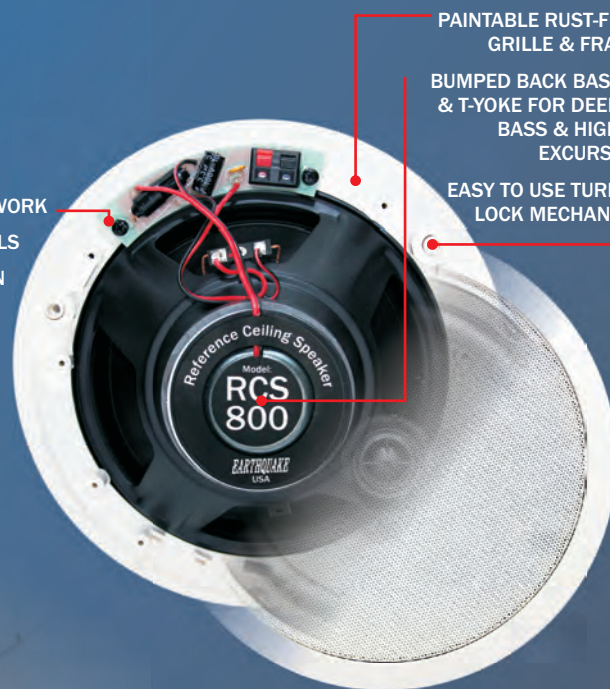
- 1" (25MM) SILK DOME NEO TWEETER WITH SWIVEL ACTION
- 20% SMALLER FOOTPRINT FOR BETTER AESTHETICS
- LONG LASTING POLY CONE WITH BUTYL RUBBER SURROUND

High Performance
20% Less Visibility

CROSSOVER FEATURES:

- 12 dB / OCTAVE PRECISION CROSSOVER NETWORK
- CUSTOM COMPACT SPRING LOADED TERMINALS
- POLY SWITCH THERMAL TWEETER PROTECTION

MULTI-ZONING USING THE
16-CHANNEL / 8 ZONES
CINENOVA IR16



SPECIAL FEATURES:

- PAINTABLE RUST-FREE GRILLE & FRAME
- BUMPED BACK BASKET & T-YOKE FOR DEEPER BASS & HIGHER EXCURSION
- EASY TO USE TURN-N-LOCK MECHANISM

The new RCS Reference Ceiling Speakers are designed to deliver high quality audio performance while maintaining affordability.

Available in three sizes, the RCS series features polypropylene woofer cones for durability and low distortion. Each speaker has a 1 inch (25mm) silk dome swiveling NEO tweeter that can be aimed at the direction of the listeners for better sound staging.

The RCS speakers have 20% trimmer speaker frame for reduced visibility. Complete with paintable rust-resistant

grilles, these speakers can be customized to blend with any décor. Installation is quick thanks to a 3-ear Turn 'N' Lock installation mechanism:

-  CUT THE HOLE USING THE PROVIDED CUT OUT TEMPLATE
-  WIRE SPEAKER USING THE SPRING-LOADED TERMINAL
-  MOUNT SPEAKER USING THE TURN-N-LOCK MECHANISM

AVAILABLE MODEL:

IW-SUB10 (10" woofer with 10" SLAPS)

THOR

in-wall SUB10

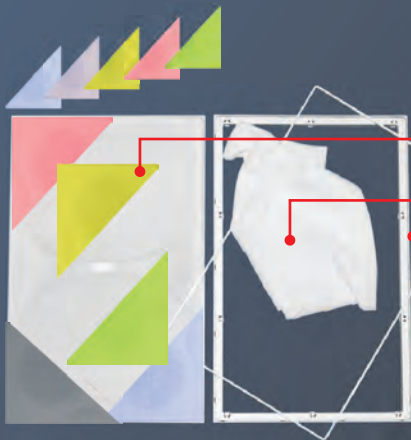
20Hz in wall, in the floor,
and under the sofa

THE EASIEST IN-WALL INSTALL:

1. RUN THE WIRE TO THE INSTALL LOCATION
2. MARK WHERE YOU WILL INSTALL THE THOR ON THE SHEETROCK.
3. USING THE SUPPLIED TEMPLATE, CUT THE HOLE TO THE EDGE OF THE STUD.
4. PLACE THE THOR IN THE HOLE.
5. SCREW THE THOR DIRECTLY TO THE STUD USING 8 SCREWS ON EACH SIDE.



STANDARD STUDS ARE 16 INCHES APART FROM CENTER TO CENTER. THE THOR HAS BEEN DESIGNED TO FIT STANDARD STUDS



3 GRILLES INCLUDED FOR ULTIMATE CUSTOMIZATION:

- WHITE PAINTABLE METAL MESH
- PAINTABLE CLOTH GRILLE
- EMPTY PLASTIC GRILLE FRAME FOR CUSTOM SPEAKER FABRIC TO MATCH YOUR DECOR - COUCH / WALL / PAINT & MOST IMPORTANTLY MEET THE "WAF" (wife approval factor).



RECOMMENDED AMPLIFIER:
CINÉNOVA IR16
XJ-300FR (AS ZONE AMPLIFIER)



The Thor, a.k.a. IW-SUB10, is the first in-wall subwoofer that solves all of your aesthetic needs while delivering an unbelievable performance. This stealth looking in-wall subwoofer has the power of a monster and the passion for details. Its patented design allows it to be bolted 16" on center, directly to the wooden 2x4 of your building's structure. Complete with its back box enclosure, the Thor delivers maximum performance with zero vibration and complete bass isolation.

Featuring the patented SWS (Shallow Woofer System) and SLAPS (Symmetrically Loaded Audio Passive System)

technologies, the Thor IW-SUB10 is the one and only in-wall subwoofer that moves 2" peak-to-peak at 20Hz with ease and tight accuracy.

Aside from its easy installation in new constructions or retrofitting, the Thor IW-SUB10 can be easily customized to match the room's décor. With three different grilles included with each unit (standard paintable metal mesh grille, standard paintable cloth grille and empty plastic grille frame), you can match the drapes, the carpet or whatever your heart desires.

AWS

all weather speakers

AVAILABLE MODELS:

AWS-502 (5 ¼")

AWS-602 (6 ½")

AWS-802 (8")

For musical enjoyment
on the patio, by the
pool or under sail



SPECIAL FEATURES:

PAINTABLE ENCLOSURE, GRILLE AND
BRACKETS TO MATCH
SURROUNDINGS

PORTED ENCLOSURE (602 AND 802
MODELS ONLY)

NEODYMIUM PEI DOME TWEETERS

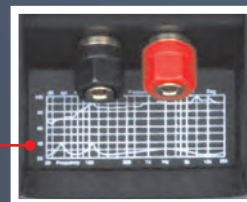
LIGHTWEIGHT POLY-MICA CONES

STAINLESS STEEL MOUNTING
HARDWARE

DURABLE UV RESISTANT PV
ENCLOSURE WITH RUST-PROOF
ALUMINUM GRILLES

GOLD PLATED BINDING POSTS

MULTIPLE MOUNTING OPTIONS



RECOMMENDED AMPLIFIER:
CINÉNOVA IR16
XJ-300FR (AS ZONE AMPLIFIER)



Earthquake's weatherproof AWS indoor/outdoor speakers combine performance, reliability and aesthetics in one package. Enamel coated anti rust aluminum grilles, high temperature UV treated enclosures and gold binding posts are only the beginning.

Available in paintable matte black or white, the AWS speakers are designed to match well with any décor. These speakers come complete with mounting brackets to accommodate multiple mounting options as well as bookshelf style placement.

For musical enjoyment on the patio, by the pool or under sail, the AWS indoor/outdoor speakers will effortlessly deliver the best performance and promise many years of trouble-free performance, with sound quality & protection.

AVAILABLE MODELS:

GRANITE-52 (5 ¼" full range 2-way speakers)

GRANITE-10D (10" dual 4Ω subwoofer)

ROCK-ON

outdoor speakers

Enhance Your
Outdoor
Living

SPECIAL FEATURES:

UV TREATED AND WEATHER-
RESISTANT ENCLOSURE MATERIALS

EPOXY RESIN DURABLE
CONSTRUCTION

ROCK-LIKE APPEARANCE AND
FINISH TO EASILY BLEND IN WITH
ANY OUTDOOR ENVIRONMENT

COMPLETELY SEALED SPEAKERS
(GRANITE-52) WITH SANTOPRENE
SURROUND, POLY CONES, AND
POLY DUST CAPS

HIGH POWER CROSSOVERS
(GRANITE-10D ONLY)

COME STANDARD IN GRANITE ROCK
FINISH. EASY TO CUSTOMIZE TO MATCH
ANY BACKYARD'S COLOR SCHEME; IT'S
AS EASY AS 1...2...3...

GRANITE-10D
SUBWOOFER

GRANITE-52

GRANITE-52

XJ-300FR: 300 WATTS MONO,
STEREO, OR 2.1 FULL RANGE
AMPLIFIER

RECOMMENDED AMPLIFIER:
XJ-300FR (AS ZONE AMPLIFIER)

The Granite-52 speakers and Granite-10D subwoofer, part of the new ROCK-on outdoor speaker series, are specifically designed to imitate a rock appearance and easily blend in with any outdoor environment. Made with UV treated, weather-resistant enclosure materials and durable epoxy resin construction, the ROCK-on speakers can withstand the demanding outdoor elements.

Granite-52 is a pair of rock speakers with a 5 ¼ inch woofer and a ½ inch tweeter. They serve as your left and right speakers and have an amazing frequency response that is unmatched by any

other rock speaker. They produce a clean, accurate sound.

The ROCK-on subwoofer, the Granite-10D, features high power crossovers that reduce distortions and deliver pure sound. Also, Granite-10D's port is "S" shaped so water cannot get trapped inside. The Granite-10D brings bass to your outdoor space, something that is greatly needed in today's rock speaker market. Combined with the Granite-52 speakers which have a matching finish, you can turn any backyard into an entertainment center.

CINÉNOVA-IR16

home, commercial, 8 zones, IR controlled amplifier



COMES WITH:
8 REMOTE CONTROLS
8 KEYPADS
4 REMOTE EYES

SPECIAL FEATURES:

INDIVIDUALLY DRIVEN AMPLIFIER BLOCKS WITH INDIVIDUAL POWER SUPPLIES (BIFILERS) FOR POWER ISOLATION, ACCURACY, AND BETTER CHANNEL SEPARATION

Limitless
Home &
Commercial
Applications

PERFECT CANDIDATE FOR MULTI-ZONING WITH MULTI-SOURCING APPLICATIONS (USING MATRIX DISTRIBUTION CONTROLS)

0.2 VOLTS - 3 VOLTS
WIDE INPUT
SENSITIVITY LEVEL



SPECIAL FEATURES:

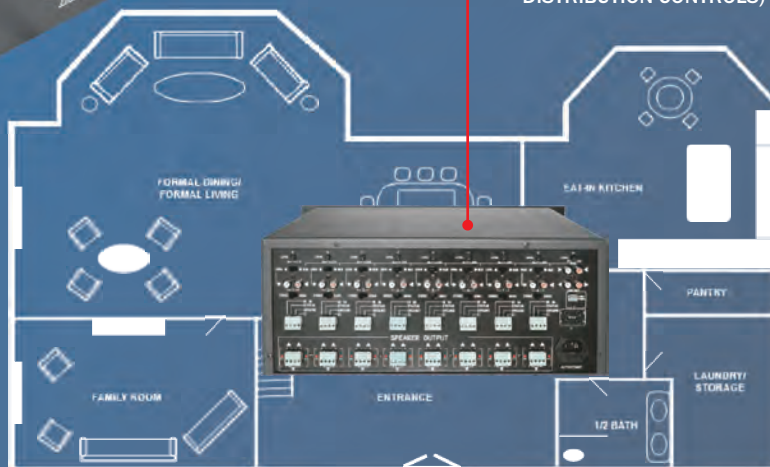
ZONE IR CONTROL WITH INDIVIDUAL DIGITAL ZONE PADS

FOUR BUILT-IN IR REPEATERS

LOCAL/BUS INPUT AUDIO SELECTOR FOR EACH ZONE

BRIDGEABLE OUTPUT

MATRIX COMPATIBLE FOR MULTIPLE SOURCE APPLICATIONS



Earthquake Sound's second generation multi-zone amplifier, the Cinénova IR16, has the power no other multi-zone amplifier on the market can equal. Designed with 8 individual power supplies (bifilar) for power isolation, accuracy and better channel separation, this rack-mountable amplifier can deliver up to 150 Watts RMS, a power rating that is almost unheard of for multi-zone amplifiers.

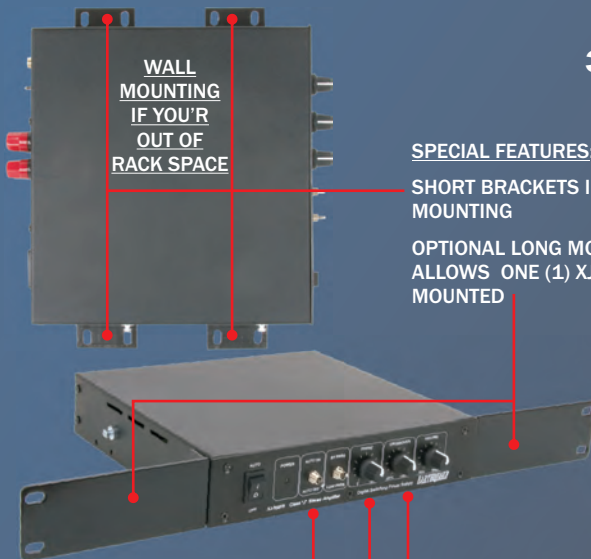
The bridgeable output design enables the Cinénova IR16 to accommodate 4-Ohm and 8-Ohm speakers. Moreover, the LOCAL/BUS input audio selector on each of the eight zones can

amplify either a single source or up to 8 different inputs/sources. The Cinénova IR16 amplifier includes eight sets of external gain keypad and remote controls with IR capability for great flexibility and user-friendly adjustments.

Whether you seek more power or more options, the Cinénova IR16 will give you more than you can ever expect from a multi-zone amplifier.

XJ-300FR

SWAT-2.4X wireless transceiver



SPECIAL FEATURES:

- MUSIC DETECTION CIRCUITRY
- VARIABLE PHASE CONTROL
- VARIABLE LOW PASS CROSSOVER WITH BYPASS SWITCH

RECOMMENDED USE WITH:

- ROCK / THOR SPEAKERS & SUBWOOFERS
- MQB1 & Q10B TACTILE TRANSDUCERS

SWAT 2.4X

STEREO WIRELESS AUDIO TRANSCEIVER

LIMITLESS APPLICATIONS:

AUDIO TRANSMISSION IN LARGE AREAS (DJ)
 OUTDOOR SPEAKER SYSTEMS (BBQ, PATIO, POOL)
 WIRELESS AUDIO TRANSMISSION / SURVEILLANCE
 PAGING SYSTEMS
 IPOD, MP3 PLAYERS

The extremely versatile and modular XJ-300FR provides multiple channel options, mounting options and applications. the XJ-300FR is a 300-watt full range amplifier; highly adaptable, it can be used as a 2 channel, 2.1 channel (2 stereo + 1 mono), or bridged 1 mono channel amplifier.

The XJ-300FR offers countless applications: if you need to install in-ceiling in the kitchen, tower speakers in the living room, or rock speakers outside, the XJ-300FR will perform flawlessly in every situation.

XJ-300FR

300 WATTS MONO, STEREO, OR 2.1 FULL RANGE AMPLIFIER



BUILT-IN INTERLOCKING MECHANISM WHERE TWO (2) XJ-300FR CAN BE CONNECTED SIDE BY SIDE AND BE RACK MOUNTABLE

SPECIAL FEATURES:

- 20 CHANNELS
- 26 GHz
- SUPPORTS POINT TO MASS BROADCAST



The SWAT-2.4X's state of the art technology includes an effective anti-jamming feature able to fully shield the interference from any other wireless equipment, leaving clear, high-fidelity wireless audio frequency.

The SWAT-2.4X offers 20 channels, more than any other transceiver on the market. It also has a channel tracking mode, in which the Receiver will automatically find the Transmitter's channel after it is changed.

SPECIFICATIONS

IMĀGE-X IN-WALL SPEAKERS



Imāge-5X



Imāge-6X



Imāge-8X



Imāge-C25X



Imāge-846X

Woofer / Midrange	5 1/4" (133mm) low mass poly-fiber cone	6 1/2" (165mm) low mass poly-fiber cone	8" (203mm) low mass poly-fiber cone	Two 5 1/4" (133mm) low mass poly-fiber	8" carbon fiber woofer + 4" x 6" carbon fiber midrange
Tweeter	1" (25mm) adjustable silk dome	1" (25mm) adjustable silk dome	1" (25mm) adjustable silk dome	1" (25mm) adjustable silk dome	1" (25mm) adjustable silk dome
Frequency Response	65 Hz - 21 kHz	52 Hz - 21 kHz	52 Hz - 21 kHz	50 Hz - 21 kHz	30 Hz - 22 kHz
Recommended Power	20 W - 100 W	30 W - 120 W	50 W - 200 W	40 W - 200 W	60 W - 500 W
Sensitivity (1W/1M)	92 dB	91.5 dB	90 dB	93 dB	93 dB
Impedance	8-Ohm	8-Ohm	8-Ohm	8-Ohm	8-Ohm
Cut Out Dimension (HxW)	9 3/8" x 6 1/8" (238 x 156)mm	10 3/4" x 7 1/4" (273 x 184)mm	12 3/4" x 8 3/4" (329 x 222)mm	7 3/8" x 16 3/8" (187 x 340)mm	14 1/8" x 9" (359 x 229)mm
Mounting Depth	2 3/4" (70mm)	3 1/8" (79mm)	3 9/16" (90mm)	3" (77mm)	3 3/4" (95mm)
Outer Dimension (HxW)	11" x 7 9/16" (279 x 192)mm	12" x 8 11/16" (305 x 221)mm	14" x 10" (356 x 256)mm	8 5/8" x 17 5/8" (219 x 448)mm	15 3/4" x 10 5/8" (400 x 270)mm
Finish	White / paintable	White / paintable	White / paintable	White / paintable	White / paintable

IMĀGE-X IN-CEILING SPEAKERS



CM-600



CM-800

Woofer / Midrange	6 1/2" (165mm) low mass poly-mica cone	8" (203mm) low mass poly-mica cone
Tweeter	1" (25mm) adjustable silk dome	1" (25mm) adjustable silk dome
Frequency Response	60 Hz - 21 kHz	45 Hz - 21 kHz
Recommended Power	20 W - 100 W	25 W - 125 W
Sensitivity (1W/1M)	89 dB	89 dB
Impedance	8-Ohm	8-Ohm
Cut Out Dimension	8 1/4" (208mm)	9 3/4" (246mm)
Mounting Depth	3 3/4" (94mm)	4 3/8" (105mm)
Outer Dimension	9 7/8" (251mm)	11 7/16" (290mm)
Finish	White / paintable	White / paintable

REFERENCE IN-CEILING SPEAKERS



RCS-500



RCS-650



RCS-800

Woofer / Midrange	5 1/4" (135mm) polypropylene cone	6 1/2" (165mm) polypropylene cone	8" (203mm) polypropylene cone
Tweeter	1" (25mm) adjustable silk dome	1" (25mm) adjustable silk dome	1" (25mm) adjustable silk dome
Frequency Response	60 Hz - 20 kHz	45 Hz - 20 kHz	40 Hz - 20 kHz
Recommended Power	5 W - 65 W	5 W - 80 W	10 W - 100 W
Sensitivity (1W/1M)	92 dB	92 dB	92 dB
Impedance	8-Ohm	8-Ohm	8-Ohm
Cut Out Dimension	6 1/2" (165mm)	7" (177mm)	8 9/16" (217mm)
Mounting Depth	3" (77mm)	3" (77mm)	3 7/8" (98mm)
Outer Dimension	7 1/2" (191mm)	8" (203mm)	9 5/8" (245mm)
Finish	White / paintable	White / paintable	White / paintable

SPECIFICATIONS

EDGELESS IN-WALL & IN-CEILING SPEAKERS



EWS-600



EWS-800



EWS-530C



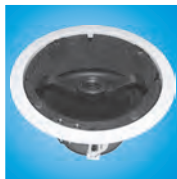
ECS-6.5



ECS-8.0

Woofers / Midrange	6 1/2" (165mm) low mass stiff kevlar cone	8" (203mm) low mass stiff kevlar cone	Two 5 1/4" (133mm) / + one 3" (77mm) stiff kevlar cones	6 1/2" (165mm) low mass stiff kevlar cone	8" (203mm) low mass stiff kevlar cone
Tweeter	1" (25mm) swivel silk dome NEO	1" (25mm) swivel silk dome NEO	Two 1" (25mm) swivel silk dome NEO	1" (25mm) swivel silk dome NEO	1" (25mm) swivel silk dome NEO
Frequency Response	40 Hz - 20 kHz	30 Hz - 20 kHz	40 Hz - 20 kHz	40 Hz - 20 kHz	30 Hz - 20 kHz
Recommended Power	35 W - 150 W	50 W - 240 W	40 W - 180 W	30 W - 145 W	45 W - 235 W
Sensitivity (1W/1M)	87 dB	88 dB	87 dB	87 dB	88 dB
Impedance	8-Ohm	8-Ohm	8-Ohm	8-Ohm	8-Ohm
Cut Out Dimension (HxW)	10 7/8" x 7 7/16" (275 x 188)mm	12 7/8" x 8 13/16" (326 x 224)mm	8 13/16" x 12 7/8" (224 x 326)mm	7 7/8" (200mm) diameter	9 1/2" (240mm) diameter
Mounting Depth	3 9/16" (90mm)	4 1/16" (103mm)	3 3/16" (85mm)	4 5/16" (110mm)	4 7/8" (124mm)
Outer Dimension (HxW)	11 15/16" x 8 9/16" (303 x 217)mm	13 3/4" x 9 3/4" (349 x 248)mm	9 3/4" x 13 3/4" (248 x 349)mm	8 9/16" (217mm) diameter	10 1/2" (267mm) diameter
Grille Finish	White / paintable	White / paintable	White / paintable	White / paintable	White / paintable

SWEETSPOT, ACS & IQ IN-CEILING SPEAKERS



SS-82W



ACS-3.0



CM-6S



CM-6Dual



CM-8S



CM-8Dual

Woofers / Midrange	8" (203mm) polypropylene cone woofer	3" (77mm) poly cone 1" (25mm) voice coil full range	6 1/2" (165mm) carbon fiber cone single voice coil	6 1/2" (165mm) carbon fiber cone dual voice coil	8" (203mm) carbon fiber cone single voice coil	8" (203mm) carbon fiber cone dual voice coil
Tweeter	3/4" (20mm) adjustable silk dome	N/A	Two 7/8" (22mm) adjustable silk dome	Two 7/8" (22mm) adjustable silk dome	Two 7/8" (22mm) adjustable silk dome	Two 7/8" (22mm) adjustable silk dome
Frequency Response	30 Hz - 30 kHz	150 Hz - 20 kHz	40 Hz - 21 kHz	40 Hz - 21 kHz	30 Hz - 21 kHz	30 Hz - 21 kHz
Recommended Power	30 W - 300 W	5 W - 50 W	20 W - 300 W	25 W - 300 W	35 W - 400 W	40 W - 400 W
Sensitivity (1W/1M)	91 dB	85 dB	93 dB	93 dB	91 dB	91 dB
Impedance	8-Ohm	8-Ohm	8-Ohm	8-Ohm	8-Ohm	8-Ohm
Cut Out Dimension	9 9/16" (244mm)	2 15/16" (74mm)	8 1/4" (208mm)	8 1/4" (208mm)	9 3/4" (247mm)	9 3/4" (247mm)
Mounting Depth	5 3/16" (147mm)	2 3/8" (60mm)	3 3/8" (87mm)	3 3/8" (87mm)	4 5/16" (110mm)	4 5/16" (110mm)
Outer Dimension	11 13/16" (282mm)	3 3/16" (80mm)	9 7/8" (249mm)	9 7/8" (249mm)	11 7/16" (290mm)	11 7/16" (290mm)
Finish	White / paintable	White / paintable	White / paintable	White / paintable	White / paintable	White / paintable

SPECIFICATIONS

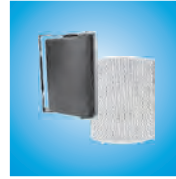
THOR IN-WALL SUBWOOFER



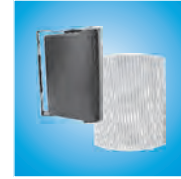
IW-SUB10

Subwoofer	10" long excursion
Passive Radiator	10" SLAPS
Frequency Response	20 Hz - 160 Hz
Recommended Power	50 W - 300 W
Sensitivity (1W/1M)	89 dB
Impedance	4-Ohm
Cut Out Dimension (H x W)	24" x 13 3/4" (610 x 349) mm
Mounting Depth	3 3/4" (95 mm)
Outer Dimension (H x W x D)	28" x 18 5/8" x 3 3/4" (711 x 473 x 95) mm
Finish	White / paintable. Custom grille options

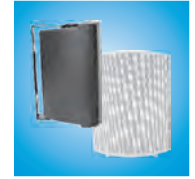
AWS ALL WEATHER SPEAKERS



AWS-502



AWS-602



AWS-802

Woofer/Midrange	5 1/4" (135mm) poly-mica cone	6 1/2" (165mm) poly-mica cone	8" (203 mm) poly-mica cone
Tweeter	3/4" PEI mylar dome	3/4" PEI silk dome	1" PEI silk dome
Frequency Response	68 Hz - 20 kHz	65 Hz - 20 kHz	55 Hz - 20 kHz
Recommended Power	20 W - 125 W	35 W - 150 W	60 W - 200 W
Sensitivity (1W/1M)	90 dB	96 dB	96 dB
Impedance	8-Ohm	8-Ohm	8-Ohm
Dimension (H x W x D)	9 7/16" x 7 3/16" x 6 9/16" (240 x 183 x 167) mm	11 1/2" x 8 1/2" x 7 1/8" (292 x 216 x 181) mm	14 7/16" x 10 3/4" x 8 1/8" (367 x 273 x 206) mm
Finish	White / Black paintable	White / Black paintable	White / Black paintable

ROCK-ON ROCK SPEAKERS



Granite-10D



Granite-52

Subwoofer	10" long Excursion	N/A
Midrange / bass	N/A	Two 5 1/4" low mass polycone
Tweeter	N/A	1/2" mylar
Crossover	2 coils / 5 mH	2-way
Frequency Response	30 Hz - 100 Hz	50 Hz - 21 kHz
Recommended Power	20 W - 400 W	40 W - 200 W
Sensitivity (1W/1M)	92 dB	93 dB
Impedance	2 x 4-Ohm	4-Ohm
Dimension (H x W x D)	14" x 18 1/2" x 21 1/2" (356 x 470 x 546) mm	8 1/2" x 8 1/2" x 9" (216 x 216 x 229) mm
Enclosure	15 mm epoxy resin	15 mm epoxy resin
Finish	Granite rock	Granite rock

MULTI-ZONE & MODULAR AMPLIFIERS



Ginenova-IR16



XJ-300FR

Channels	16 CH / 8 zones	2 CH + 1 mono bridged
Power Output 4-Ohm	150 W - bridged	N/A
Power Output 8-Ohm	100 W - bridged	2 x 110 W + 1 x 170 W
THD	0.01%	0.08%
Damping Factor	>400	>400
Signal/Noise Ratio	>92 dB	>97 dB
Frequency Response	20 Hz - 20 kHz	20 Hz - 20 kHz
Dimension (H x W x D)	6 1/2" x 18" x 21" (65 x 457 x 534) mm	2 x 8 1/2" x 8" (51 x 216 x 203) mm
Weight	62 lbs	3.8 lbs
Finish	Flat black	Flat black

SWAT-2.4X WIRELESS AUDIO TRANSCEIVER



Channels	20
Operating Voltage	3.6 - 6 Volts DC
Frequency Range	2400 MHz - 2528 MHz
Frequency Response	20 Hz - 20 kHz
Dimension (H x W x D)	1" x 2 3/4" x 3 1/8" (25 x 69 x 80) mm
Weight	1/4 lbs each
Finish	Black painted aluminum

RAVE REVIEWS

"The **SWAT-2.4X** is the perfect solution for houses and buildings that typically have older or historic frames made of concrete or wood. Instead of hassling with retrofitting your audio wires, the **SWAT** wirelessly hooks up your home theater, outdoor area, or second zone stereo system."

"The **SWAT** produces crystal clear sound, fit for the most sophisticated of home audio systems and ideal for custom installers. Though it broadcasts a stereo signal, it can also be used in mono applications."

[IE-Residential Magazine.](#)

"One bit of serendipity was that a ground loop hum in one of the subs that has been driving me crazy disappeared, because there was no longer a direct wire connection from SSP to subwoofer"

"The beauty is that you can have several **SWAT** transmitters all going at the same time, each of which is 'paired' with a specific **SWAT** receiver."

[Secrets Of Home Theater And High Fidelity Magazine.](#)

"It has been said that many Americans are searching for two things: the best cheeseburger on the planet and more bass. I haven't found the cheeseburger yet (although I have some favorites), and I'm looking for the bass. Not just more bass, but better bass. Earthquake Sound—not the best name to use in California—manufactures home audio and mobile loudspeakers and audio components and accessories."

"The company has developed **THOR SUB-10** an in-wall subwoofer system to reach the depths of our needs for earth-shaking, extended bass response. There is something about visceral, deep, and almost inaudible bass that stimulates everyone from highway cruisers to audiophiles. But bass is best evaluated on the basis of quality, not quantity."

"The **THOR** system is capable of deep, extended bass response for both music and movie sources... Big Bass improvement."

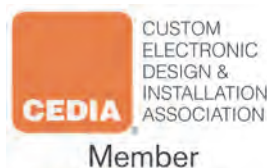
[Widescreen Review Magazine.](#)

"Once I got the **Cinenova Grande** on the measuring bench, I was even more astounded - it measured exactly as Earthquake had specified."

"Earthquake has gone to considerable lengths to prove that a potent combination of speed, grace, and power can be harnessed on a large multichannel chassis. The harder I pushed the **Cinenova Grande**, the less distortion I got."

"There are several very subtle details that only the best amps, preamps, and speakers can uncover. The Cinenova Grande unveiled them all."

[Home Theater Magazine.](#)





The Sound That Will Bring You Home



Earthquake Sound Corporation
2727 McCone Avenue | Hayward, CA 94545 | USA
Tel: (510) 732-1000 | U.S. Toll Free: (800) 576-7944 | Fax: (510) 732-1095
www.earthquakesound.com
Specifications are subject to change without notice

